

NEW TELEHANDLER

**BHARAT
KA JCB**

BETTER TODAY, *even* BETTER TOMORROW



STAGE 5

530-70, 540-70, 530-110

Gross power: 55kW(74hp) | Lift capacity: 3 000-4 000kg | Lift height: 7m to 11m

JCB

BETTER TODAY, *even* BETTER TOMORROW

Our Stage 5 machines are designed to excel today and set new standards for tomorrow. By integrating cutting-edge technology with exceptional efficiency, these machines not only enhance performance but also prioritise sustainability.

Our Stage 5 range is engineered to reduce environmental impact while delivering top-notch performance. Investing in our equipment means contributing to a greener future and building more responsibly.

Together, let's embrace advanced technology and sustainability, creating a stronger foundation for a better tomorrow with our Stage 5 products.

JCB **STAGE 5** 430 Dieselmax Engine

The JCB Stage 5 - 430 engine delivers 55 kW (74 hp) of power and provides a class-leading 440 Nm of torque at low RPM. This advanced engine enhances productivity while reducing fuel consumption and features a durable, lifetime after-treatment system. Equipped with Stage 5-compliant emission control technology, it includes an oxidation catalyst and a diesel particulate filter. The engine also features a robust fuel filtration system, with the primary filter replacement interval extended to 1 000 hours. Designed as a fully integrated, reliable, and efficient solution, it operates seamlessly, ensuring maximum uptime for your machine without impacting the user experience.



Well tested 
200000+
cumulative hours



INDIA'S MATERIAL HANDLING EXPERT



The all-new JCB Telehandler is a highly versatile machine with enhanced durability, lift capacities of up to 4000 kg*, a lift height of up to 11 m*, and a wide range of attachments. The JCB Telehandler is truly a multi-tasker, combining the functions of many machines into one. It is capable of performing jobs that would typically require other specialised machines, such as cranes, loading shovels, forklift trucks, and aerial work platforms.

ONE OF THE WORLD'S FAVOURITE, JCB TELEHANDLER ENCAPSULATES:



GREATER VERSATILITY

A wide range of attachments, suitable for use across multiple industries, gives you greater convenience and more options at work.



BETTER PRODUCTIVITY

Greater lift capabilities and higher reach of the Telehandler give you more productivity at your site.



ECONOMICAL AND COST EFFECTIVE SOLUTION

Eliminates multiple handling steps and the need for several machines, making operational costs more economical.



MECHANISATION OF JOBS

Enables cost-effective mechanisation, ensuring faster, safer and more efficient processes-significantly boosting site productivity.



SUPERIOR SAFETY

Enhanced site safety through a world-class ROPS and FOPS cabin design, offering superior visibility and world-class site safety.



Variants Available



AGRIHANDLER

The AGRIHANDLER is built for agricultural environments, designed to handle dusty and flammable materials. Enhanced with additional features from the proven 530-70 and 530-110 models, it delivers improved uptime, durability, and safety.

- 1 Reversible fan
- 2 Battery isolator
- 3 Grain bucket
- 4 Fire extinguisher
- 5 Boom wiper seal
- 6 New belly plate
- 7 Roof aircon
- 8 Exhaust cover

WASTEMASTER

The WASTE MASTER is specifically engineered for the Waste Recycling Industry, addressing challenges like structural damage and tyre punctures. This variant comes equipped with enhanced features, built on the proven capabilities of the 530-70 and 530-110 models.



- 1 Solid tyre
- 2 Heavy-duty axle
- 3 Front glass & roof protection
- 4 Fully guarded machine
- 5 Front fenders
- 6 Boom wiper and guard

*Lift height & Capacity will vary as per machine variants & models. T&C apply.

BETTER FUEL EFFICIENCY & PRODUCTIVITY



1 Up to 15%* Better Fuel Efficiency

Enjoy significant savings with up to 15%* better fuel efficiency. This reduction in fuel consumption lowers the overall cost of ownership and ensures long-term operational savings.

2 Versatile Operating Modes

- **Eco Mode:** Designed to tackle light material handling tasks such as paper, mushrooms, or waste, offering optimal performance and improved fuel efficiency.
- **Power Mode:** Designed for heavy-duty operations, allowing maximum output without any compromise.

3 Gravity Lowering System

The energy-efficient boom lowering system reduces fuel consumption and enhances operational savings by utilising the boom's potential energy during lowering process.

4 Quick Hitch Attachment

Quick-change attachments streamline multitasking and enhance job site versatility.

5 4-Wheel Rear Drive with Independent Braking System

Enjoy a lower turning radius and exceptional maneuverability, ensuring precise control even in tight spaces.

6 Roof Aircon

For enhanced operator comfort and efficiency, the new JCB Telehandler features improved air conditioning management within the cabin.

*Comparison is based on CEV Stage IV Telehandler tested under controlled and standard conditions.



BETTER SAFETY & DURABILITY



- 1 More safety with ROPS/FOPS-certified cabin.
- 2 Hose burst check valves on the Rams offer extra safety by preventing collapse in the event of hose failure.
- 3 Stabiliser cut-off# & hydraulic cut-offs** for safe operation.
- 4 The LMI (Load Moment Indicator) monitors loads, alerts on overloads, and shows the machine's angle with a clear inclinometer.
- 5 The JCB Telehandler offers 360° visibility with its low boom, bonnet profile, side & rear-view mirrors, reverse alarm, and angle meter.
- 6 For quick, easy, and safe access, JCB Telehandlers are equipped with three-point access and two cab steps.
- 7 The narrow chassis, U-shaped boom, and 20 mm thick side plates deliver exceptional strength and torsional durability.
- 8 A minimum of 1m boom overlap improves the structural rigidity of the boom.
- 9 Single side plates enhance strength and rigidity at the core of the machine.
- 10 The one-piece fully welded chassis improves the strength and durability.
- 11 The lift, tilt, and extension rams are secured by keyhole castings for better structural integrity.



BETTER SERVICE & MAINTENANCE



- 1 **Side Engine**
Featuring an industry-first side-shift engine for improved access and serviceability, along with a split-type engine pod that allows enhanced access to the engine.
- 2 **Ground-Level Access**
All daily checks, greasing, and serviceable components are easily accessible.
- 3 **Effortless Maintenance**
Battery access is lockable with the ignition key. The diesel tank can be filled from ground level. The primary fuel filter replacement interval has doubled from 500 to 1 000 hours in Stage 5 machines, boosting productivity and reducing maintenance frequency.
- 4 **Quick to Clean & Service**
The tiltable cooling pack and reversible fan keep the telehandler running smoothly, even in dusty conditions. Fan scavenging helps extend the air cleaner's life.
- 5 **Power of LiveLink**
Remotely monitor and manage telehandlers with LiveLink. Improve performance, lower fuel costs, and proactively handle service and maintenance, all from anywhere.



#Available in 530-1110 | ** Optional | ^ Available in Agrihandler

LIFT PERFORMANCE

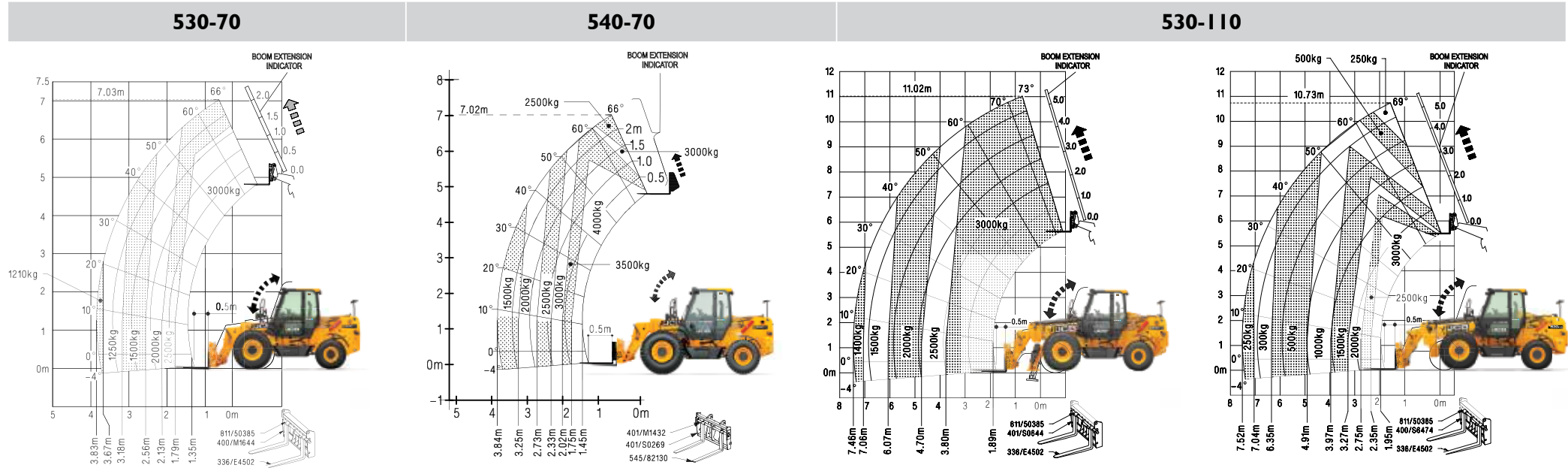
JCB TELEHANDLER 530-70 | SPECIFICATION **JCB TELEHANDLER 540-70 | SPECIFICATION**

Operating weight: 7 154 kg **Max. payload:** 3 tonnes
Max. lift height: 7 metres

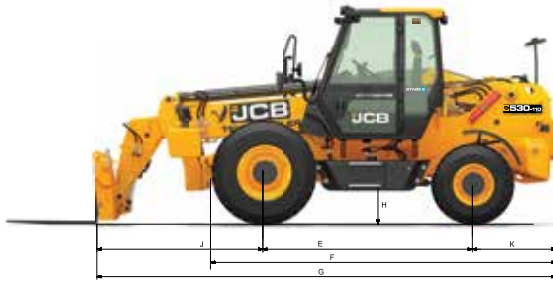
Operating weight: 8 100 kg **Max. payload:** 4 tonnes
Max. lift height: 7.0 metres

JCB TELEHANDLER 530-110 | SPECIFICATION

Operating weight: 9 060 kg **Max. payload:** 3 tonnes
Max. lift height: 11 metres



		530-70	540-70	530-110
				With stabilisers extended
Maximum lift capacity	kg	3 000	4 000	3 000
Lift capacity to full height	kg	2 500	2 500	3 000
Lift capacity at full reach	kg	1 210	1 500	1 400
Lift height	m	7.0	7.0	11.0
Reach at maximum lift height	m	1.0	1.0	0.9
Maximum forward reach	m	3.8	3.8	7.4
Reach with 1 tonne load	m	3.8	3.8	7.4
Placing Height	m	6.3	6.3	10.5
				With stabilisers retracted
				3 000
				250
				250
				1.5
				7.5
				4.9
				10.25



STATIC DIMENSIONS - Dimension - m

Parameters		530-70	540-70	530-110
A Overall height	m	2.64	2.64	2.64
B Overall width (over tyres)	m	2.4	2.4	2.4
C Inside width of cab	m	0.79	0.79	0.79
D Front track width	m	1.99	1.99	1.99
E Wheelbase	m	2.54	2.54	2.54
F Overall length to front tyres	m	4.13	4.13	4.13
G Overall length to front carriage	m	4.92	4.92	5.43
H Ground clearance	m	0.34	0.34	0.34
J Front-wheel centre to carriage	m	1.42	1.42	1.93
K Rear-wheel centre to rear face	m	0.95	0.95	0.95
Operating weight	kg	7 220 (with Fork)	8 498 (with Fork)	9 272 (with Fork)
Outside turn radius (over tyres)	m	4.85	4.85	4.85
		Bucket rollback angle (at ground) 41 deg.	Bucket rollback angle (at ground) 41 deg.	Bucket Rollback Angle (at ground) 38 deg.
		Bucket dump angle (at full height) 26 deg.	Bucket dump angle (at full height) 26 deg.	Bucket dump angle (at full height) 12 deg.
				Overall width with stabilisers fully deployed 2.65 m

ENGINE

JCB 430, CRDi, 55KW STAGE 5 Turbocharged with EGR Cooler diesel engine, 4 Cylinder, water cooled & After Treatment System - DOC & DPF
 Displacement: 3.0 L
 Gross power: 55 kW (74 hp) @ 2200* rpm
 Max torque: 440 Nm@1 150 rpm
 Eco mode and Power mode operation with switch

TRANSMISSION

JCB 4WD synchro shuttle transmission. 4-speed fully synchromesh gearbox with integral torque converter and electrically operated forward - reverse shuttle.

- Easy to use, column-mounted electric switch allows operator to change machine direction while in motion without taking his hands off the steering wheel.
- This leads to safe and efficient operation and cycle times. The pedal layout and conventional 4-pattern gear lever with transmission switch adds to the overall ease of operation
- Torque converter stall ratio 3.01:1.
- 4WD can be selected at any time on the move with a simple electric switch.
- Additional transmission dump provided on loader lever, to help disengaging transmission in need of higher hydraulic power demand.

BRAKES

Service: Hydraulically actuated, dual-line, self-adjusting, compensated oil-immersed, multi-disc type on the front axle, operated through independent pedals, linked together for normal use. Two independently operating foot pedals enable machine to manoeuvre in tight spaces.

Parking: Hand-operated cable-actuated disc brake mounted on front axle input disc and additionally transmission dump.

STEERING

- Rear-wheel hydrostatic power steering with manual capability in the event of engine or hydraulic power failure.

ELECTRICALS

- 130 Ampere-hour, 12V battery system with alternator and full road lighting.
- Dust and waterproof IP69 electrical connectors.

OPTIONS & ACCESSORIES

- Windscreen & Roof Guard
- Fire Extinguisher
- Hydraulic Cut-off
- Reversible Fan
- Rear View Camera

TYRES

Front	33cm (13") x 61cm (24") 16PR
Rear	31.8cm (12.5") x 45.7cm (18") 12PR Industrial traction pattern tyres
Tyre options	1HD Tyres / Extra HD Tyres / Solid Tyres / Agri Tyres

SPEED

Maximum road speed : 30 km/hr

SERVICE CAPACITIES

Fuel tank	110 L
Hydraulic tank	120 L
Engine coolant	21 L
Engine oil	14.2 L
Transmission	18 L
Front axle	21 L
Rear axle	11 L

CABIN

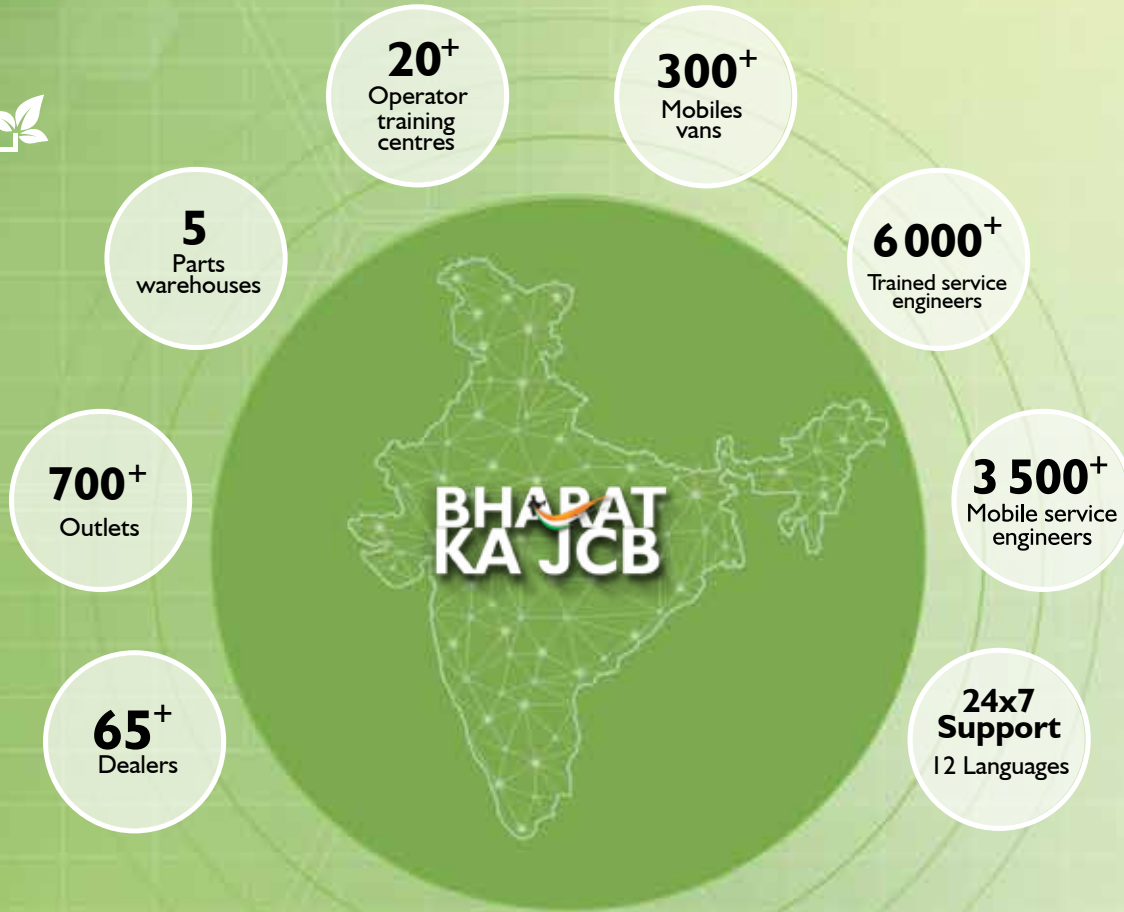
- Conform to ROPS ISO 3471 & FOPS ISO 3449 tinted & laminated cab glass provides excellent all-round visibility & sun protection.
- A fully adjustable seat with seat belt combined with ergonomically positioned controls and soft-touch steering wheel maximise operator output.
- Large convex rearview mirror, interior light, front screen wiper, front and rear horn, hazard warning system and toolbox.
- Instrumentation Panel includes engine speed, engine hours, fuel level, coolant temperature, engine oil pressure, blocked air filter, transmission oil pressure, 12V Socket for mobile charger & DPF Regeneration status.
- Longitudinal load moment Indicator (LLMI) & inclinometer to provide warnings on machine stability.
- 2 speed full ducted AC unit in cabin.
- Regeneration switch for manual regeneration
- Guide Me Home feature for enhanced safety and convenience

HYDRAULICS

	530-70	540-70	530-110
Pump	Variable displacement piston pump		
Pump capacity	108 lpm		
Main relief valve	263 bar		
Hydraulic cycle times (in sec) with fork			
Boom Up	9.1	8.4	9.2
Boom Down	10.3	8.6	9.2
Crowd	3	4.0	2.3
Dump	2.4	3.0	2.3
Extend	5	5.3	12.6
Retract	4	7.4	13

- Hydraulic filter clogging indicator-Higher life of hydraulic components.
- Variable displacement pump manages the flow based on pressure, achieving lower fuel consumption and optimum productivity.

BETTER CUSTOMER SUPPORT NETWORK



Dealer's stamp:

JCB INDIA LIMITED (India Headquarters)
 23/7 Mathura Road, Ballabgarh - 121 004 Haryana, India.
 For more information, call our toll free no. **1800-1037-386** | Website: www.jcb.com



©2009 JCB Sales. All rights reserved. No part of this publication may be reproduced, stored in a retrieval system, or transmitted in any form or by any other means, electronic, mechanical, photocopying or otherwise, without prior permission from JCB Sales. All references in this publication to operating weights, sizes, capacities and other performance measurements are provided for guidance only and may vary dependant upon the exact specification and usage of machine. They should not therefore be relied upon in relation to suitability for a particular application. Guidance and advice should always be sought from your JCB Dealer. JCB reserves the right to change specifications without notice. Illustrations and specifications shown may include optional equipment and accessories. The JCB logo is a registered trademark of J.C. Bamford Excavators Ltd.

